



OUR EVENT
SPACES!

LET US BE A PART OF YOUR NEXT EVENT!

Let us host your next event at any of
our 6 outlets located around the
island!

All prices stated are for 4 hours.

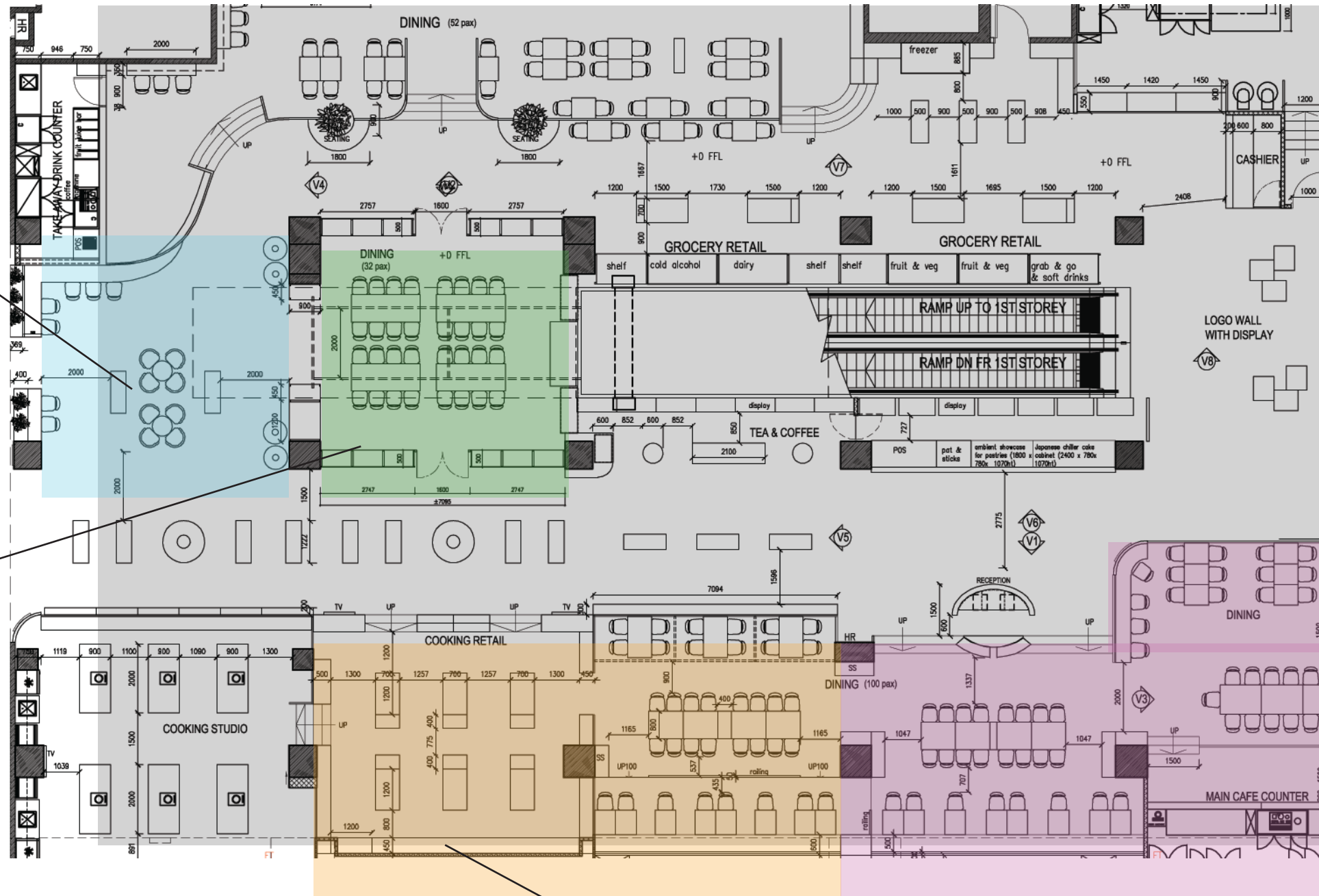
Any extension is subject to the outlet's
availability, and will be chargeable at a
pro-rated hourly price (minimum 2 hours).



DOWNTOWN GALLERY



Kiosk Area



Cooking Studio Dining Area + Café Section 3

DOWNTOWN GALLERY

OPENING HOURS

Monday to Friday: 8am - 10.30pm

Saturday/Sunday/PH: 9am - 6pm

BLOCK OFF TIMINGS:

Monday to Friday: 11.30am - 4.30pm

Weekends & PH: 5pm - 6pm

WHOLE CAFÉ



seated: 120

standing: 150

MINIMUM SPEND REQUIRED

Monday/Tuesday/Wednesday | \$5000

Thursday/Friday | \$6000

Saturday/Sunday | \$6500

WHOLE OUTLET

seated or standing: 300

MINIMUM SPEND REQUIRED

Monday to Sunday | \$15,000

CAFÉ SECTION 3 + CS DINING AREA

seated: 60

standing: 80



MINIMUM SPEND REQUIRED

Monday/Tuesday/Wednesday | \$3000

Thursday/Friday | \$4000

Saturday/Sunday | \$4500

DOWNTOWN GALLERY

WINE ROOM ●

seated: 30

standing: 40

MINIMUM SPEND REQUIRED

Monday/Tuesday/Wednesday | \$2000

Thursday/Friday/Weekends/PH | \$3000

KIOSK AREA ●

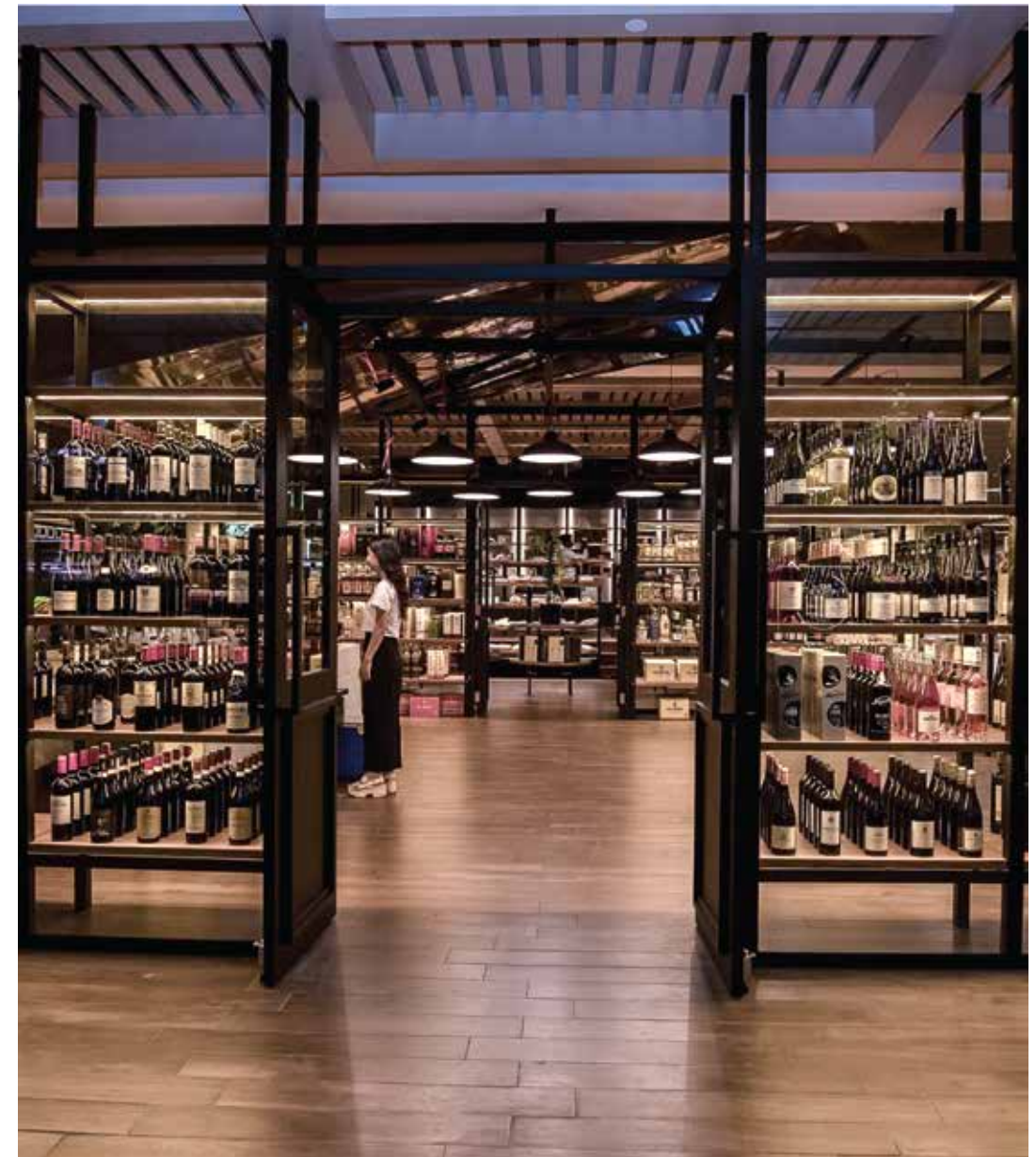
seated: 25

standing: 35

MINIMUM SPEND REQUIRED

Monday/Tuesday/Wednesday | \$1500

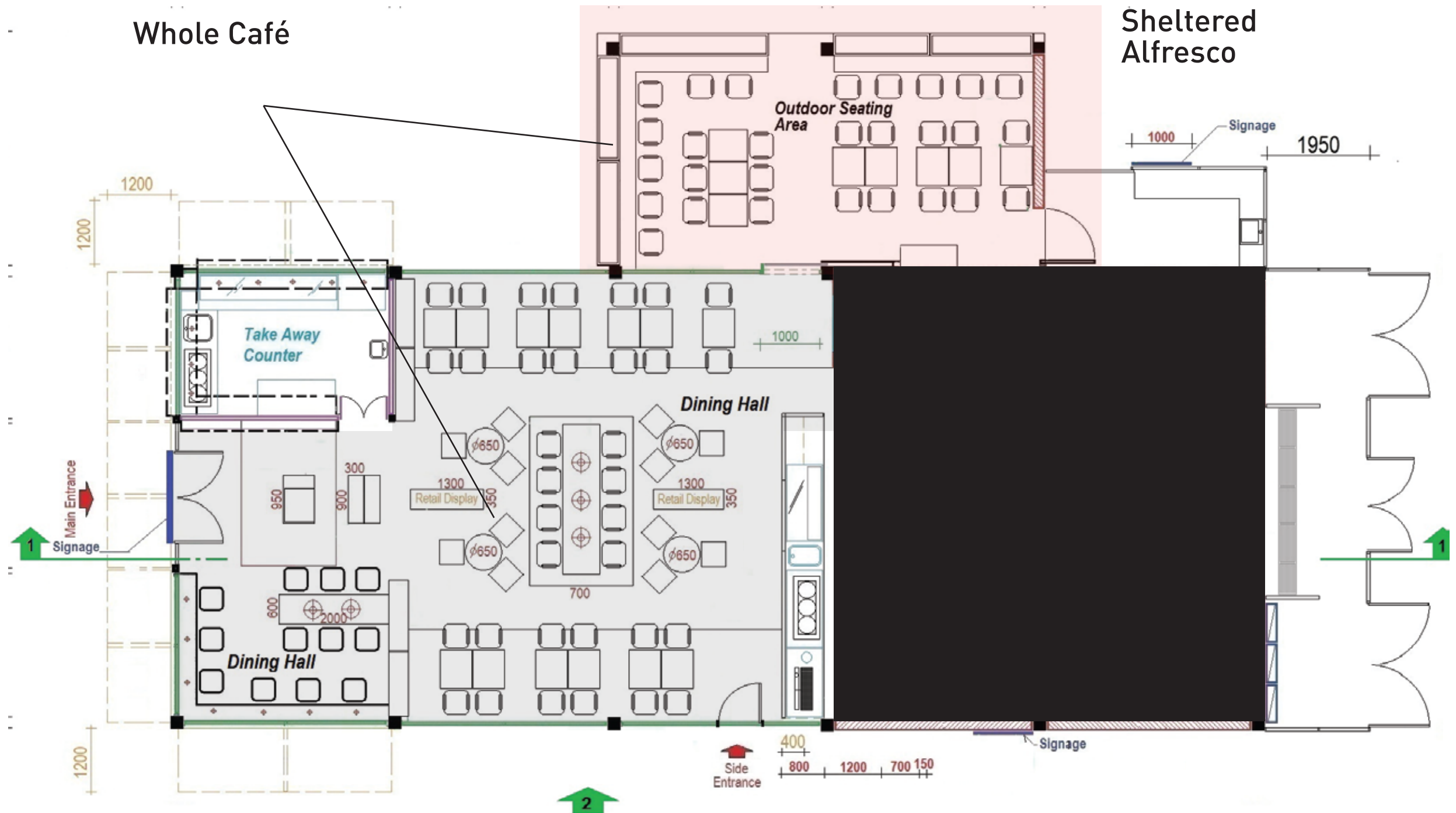
Thursday/Friday/Weekends/PH | \$2000



RAFFLES PLACE



RAFFLES PLACE



RAFFLES PLACE

OPENING HOURS

Monday to Friday: 8am - 10.30pm

Saturday: 9am - 10.30pm

Sunday: 9am - 6pm

BLOCK OFF TIMINGS:

Monday to Friday: 8am - 5pm

Sunday: 5pm - 6pm

WHOLE CAFÉ



seated: 90

standing: 120

MINIMUM SPEND REQUIRED

Monday/Tuesday/Wednesday | \$5500

Thursday/Friday/Weekends/PH | \$7500

SHELTERED ALFRESCO



seated: 20

standing: 30

MINIMUM SPEND REQUIRED

Monday/Tuesday/Wednesday | \$2000

Thursday/Friday/Weekends/PH | \$2500

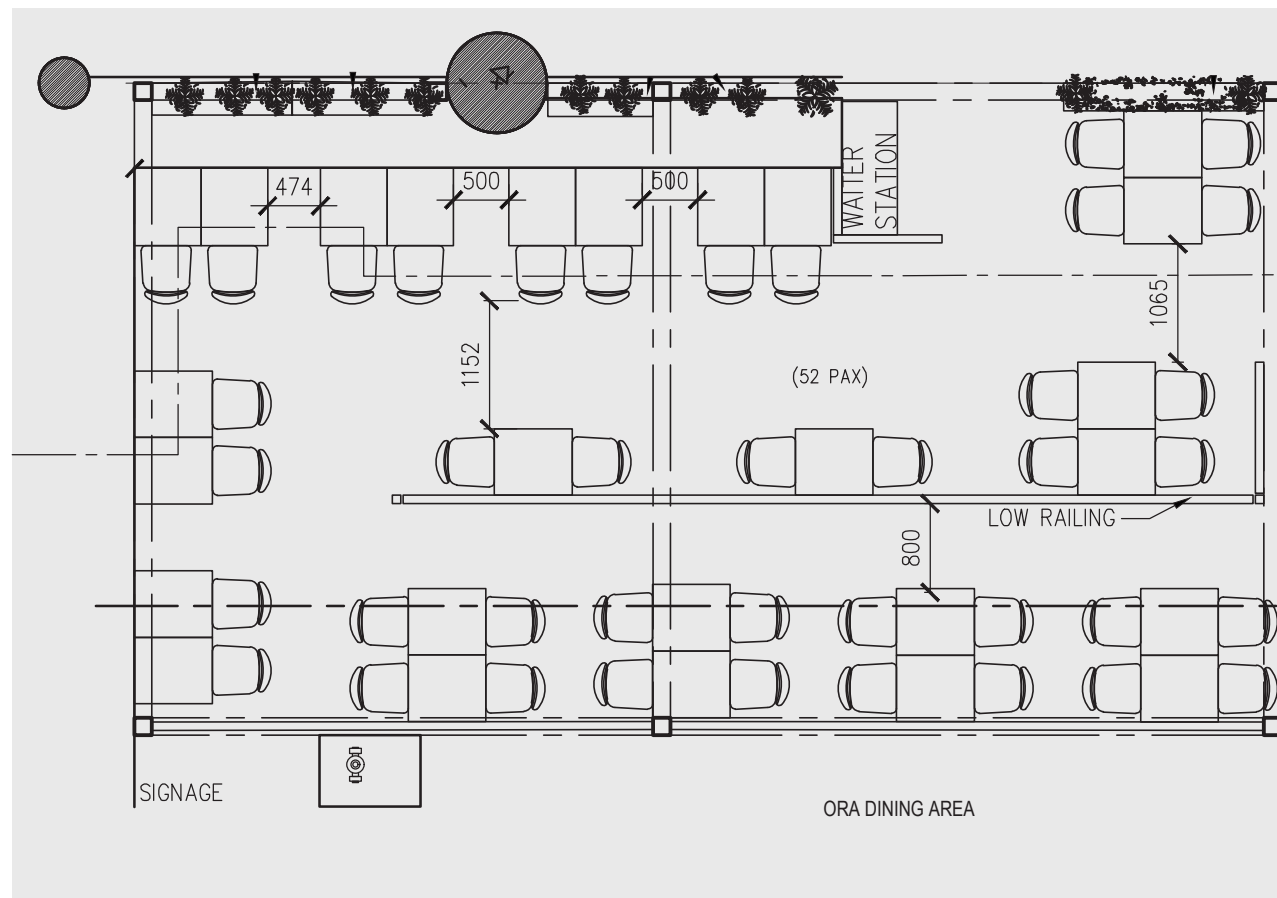




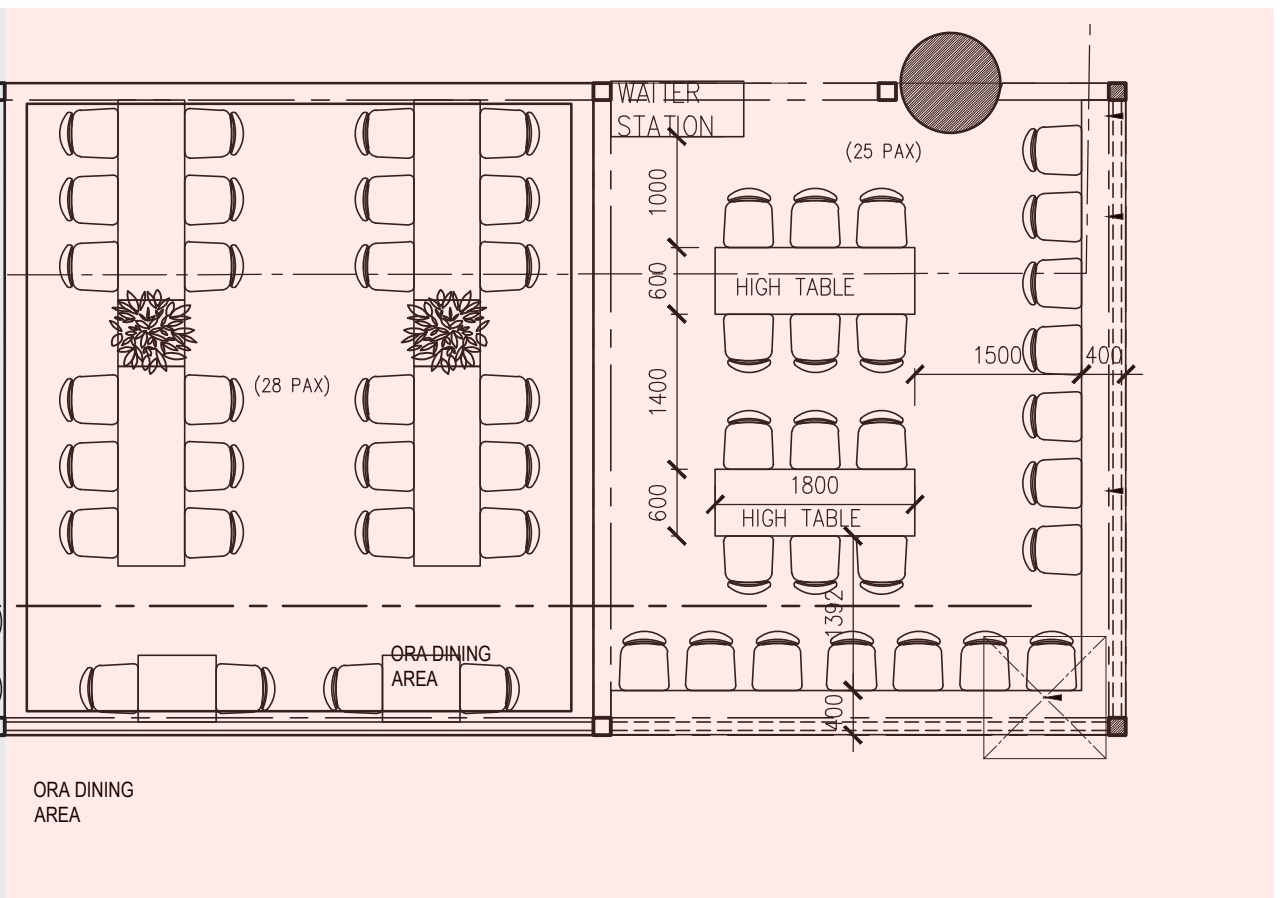
PLQ

PLQ AL-FRES(0

Low Seating



High Seating



PLQ ALFRESCO

* whole outlet booking is not available

OPENING HOURS

Monday to Friday: 8am - 10.30pm

Weekends/PH: 9am - 10.30pm

BLOCK OFF TIMINGS:

Monday to Friday: 11.30am - 4.30pm

Weekends & PH: 9am - 5pm

WHOLE AREA



seated: 100

standing: 140

MINIMUM SPEND REQUIRED

Monday/Tuesday/Wednesday | \$6500

Thursday/Friday/Saturday/Sunday | \$7500

LOW SEATING AREA



seated: 50

standing: 70

MINIMUM SPEND REQUIRED

Monday/Tuesday/Wednesday | \$3500

Thursday/Friday/Saturday/Sunday | \$4500

HIGH-SEATING AREA



seated: 50

standing: 70

MINIMUM SPEND REQUIRED

Monday/Tuesday/Wednesday | \$3500

Thursday/Friday/Saturday/Sunday | \$4500

RAFFLES CITY

THE
PROVIDORE





RAFFLES CITY

* whole outlet booking is not available

OPENING HOURS

Monday to Friday: 8am - 10.30pm

Saturday, Sunday & PH: 9am - 10.30pm

BLOCK OFF TIMINGS:

Monday to Friday: 11.30am - 4.30pm

Weekends & PH: Whole Day

AREA A

seated: 20

standing: 30

MINIMUM SPEND REQUIRED

Monday/Tuesday/Wednesday | \$1500

Thursday/Friday | \$2000

AREA B

seated: 80

standing: 100

MINIMUM SPEND REQUIRED

Monday/Tuesday/Wednesday | \$5500

Thursday/Friday | \$7000

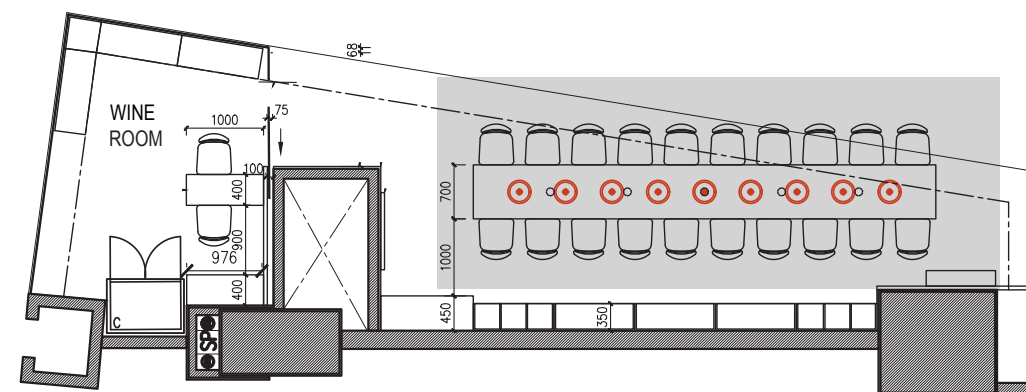
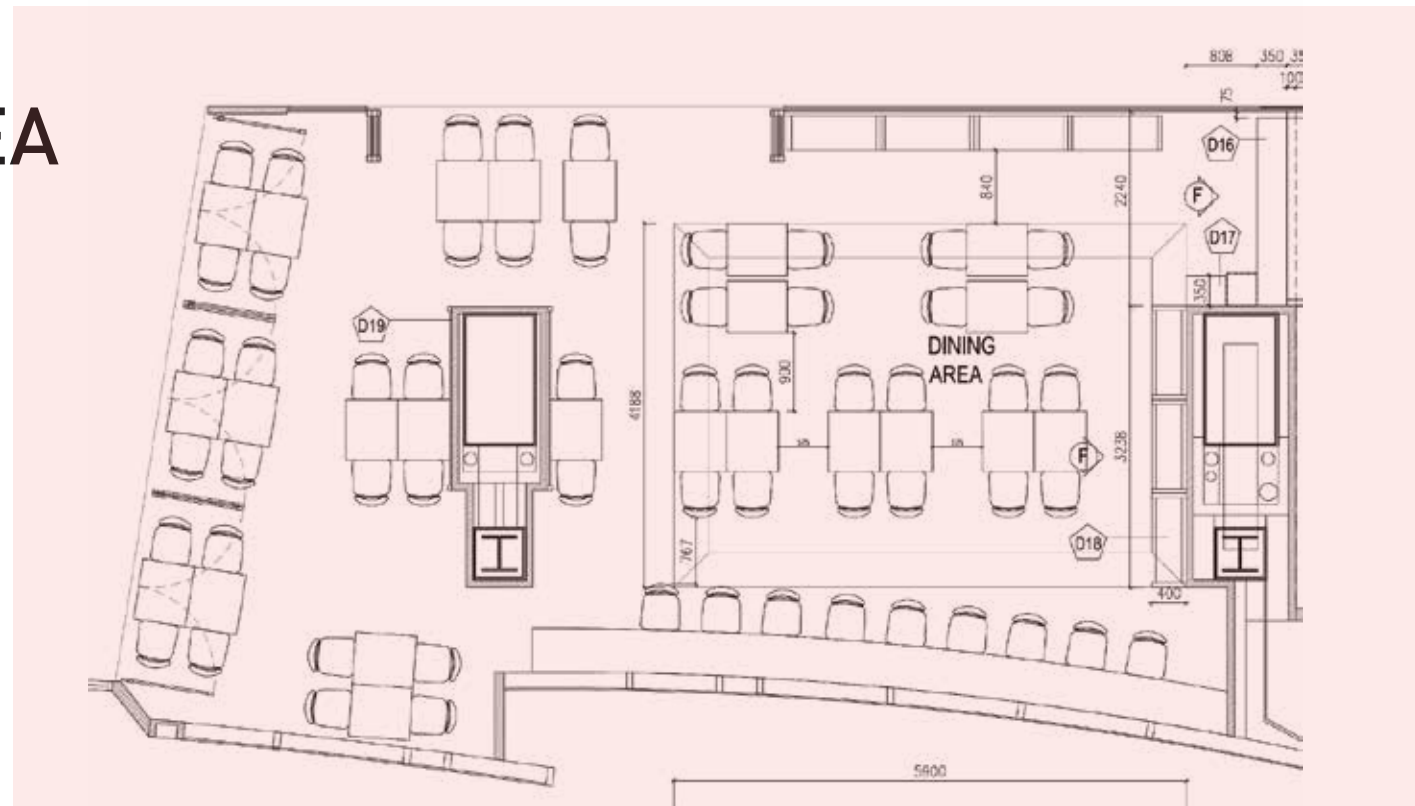


MANDARIN GALLERY



MANDARIN GALLERY

CAFÉ AREA



WINE ROOM

* refer to the image in the previous page for the Alfresco area

MANDARIN GALLERY

* whole outlet booking is not available

OPENING HOURS

Everyday: 9am - 10.30pm

BLOCK OFF TIMINGS:

Monday to Friday: 11.30am - 4.30pm

Weekends: Whole Day

WINE ROOM

seated: 20

MINIMUM SPEND REQUIRED

Monday/Tuesday/Wednesday | \$2000

Thursday/Friday | \$3000

CAFÉ AREA (INDOORS)

seated: 40

standing: 60

MINIMUM SPEND REQUIRED

Monday/Tuesday/Wednesday | \$5000

Thursday/Friday | \$5500

AL-FRESCO

seated: 45

standing: 65

MINIMUM SPEND REQUIRED

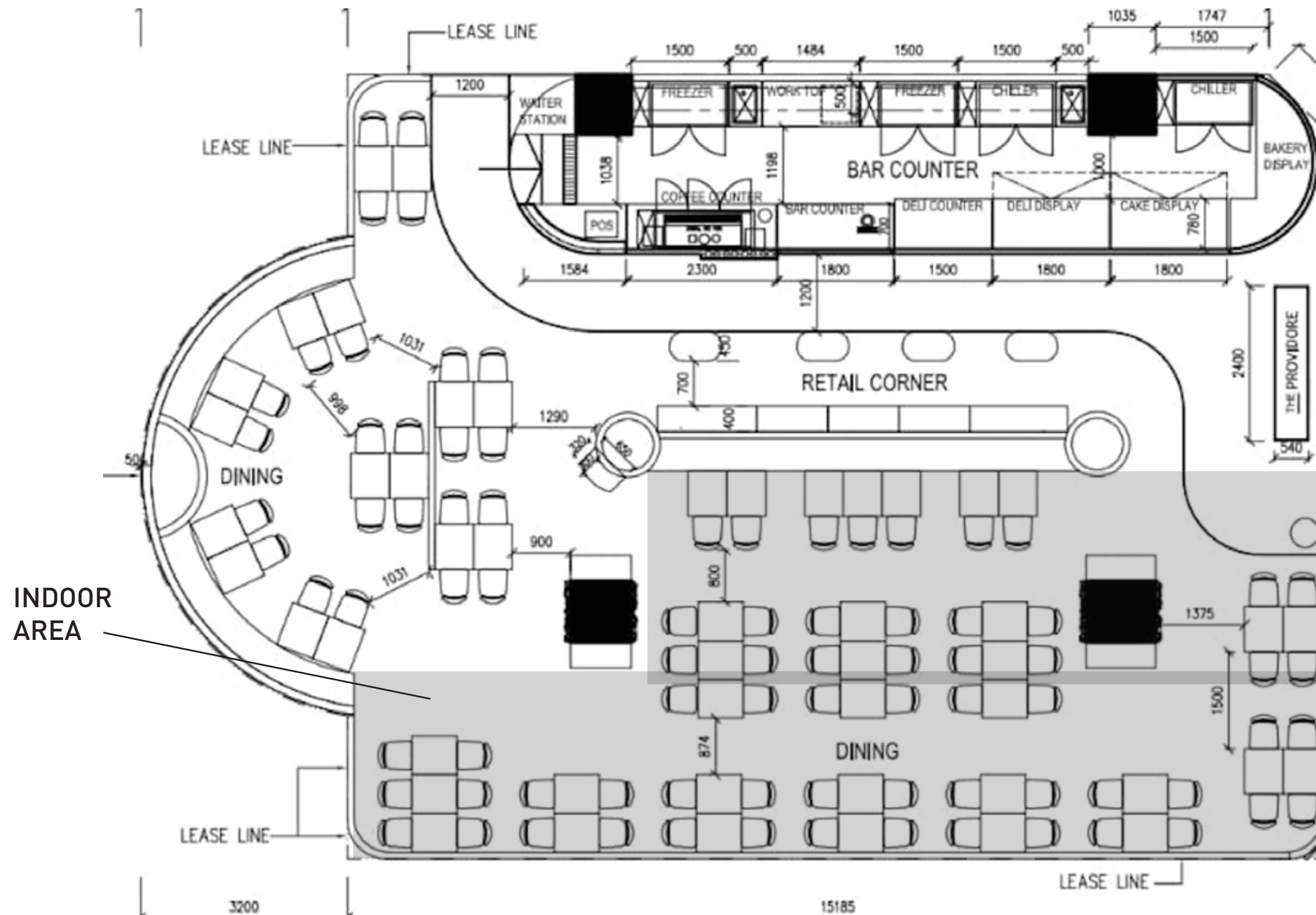
Monday/Tuesday/Wednesday | \$3000

Thursday/Friday | \$4000

WISMA ATRIA



WISMA ATRIA



WISMA ATRIA

* whole outlet booking is not available

OPENING HOURS

Everyday: 9am - 10.30pm

BLOCK OFF TIMINGS:

Monday to Friday: 11.30am - 4.30pm

Weekends: Whole Day

INDOOR

seated: 50

MINIMUM SPEND REQUIRED

Monday/Tuesday/Wednesday | \$2000

Thursday/Friday | \$3000





FOOD									
STARTERS CRAVING PLATTER \$12.99 CRAVING PLATTER \$12.99 CRAVING PLATTER \$12.99 CRAVING PLATTER \$12.99 CRAVING PLATTER \$12.99	MAIN COURSE GRAND PASTA \$14.99 GRAND PASTA \$14.99 GRAND PASTA \$14.99 GRAND PASTA \$14.99 GRAND PASTA \$14.99	DESSERTS ICE CREAM \$5.99 ICE CREAM \$5.99 ICE CREAM \$5.99 ICE CREAM \$5.99 ICE CREAM \$5.99	BEVERAGES SODA \$2.99 SODA \$2.99 SODA \$2.99 SODA \$2.99 SODA \$2.99	STARTERS CRAVING PLATTER \$12.99 CRAVING PLATTER \$12.99 CRAVING PLATTER \$12.99 CRAVING PLATTER \$12.99 CRAVING PLATTER \$12.99	MAIN COURSE GRAND PASTA \$14.99 GRAND PASTA \$14.99 GRAND PASTA \$14.99 GRAND PASTA \$14.99 GRAND PASTA \$14.99	DESSERTS ICE CREAM \$5.99 ICE CREAM \$5.99 ICE CREAM \$5.99 ICE CREAM \$5.99 ICE CREAM \$5.99	BEVERAGES SODA \$2.99 SODA \$2.99 SODA \$2.99 SODA \$2.99 SODA \$2.99	STARTERS CRAVING PLATTER \$12.99 CRAVING PLATTER \$12.99 CRAVING PLATTER \$12.99 CRAVING PLATTER \$12.99 CRAVING PLATTER \$12.99	MAIN COURSE GRAND PASTA \$14.99 GRAND PASTA \$14.99 GRAND PASTA \$14.99 GRAND PASTA \$14.99 GRAND PASTA \$14.99



TERMS & CONDITIONS

The Providore Singapore Pte Ltd. reserves the right to change the terms and conditions without prior notice. By confirming your catering order/event you agree to abide by the terms and conditions set below.

- Bookings must be confirmed at least 10 working days before date of event.
- A 30% deposit is required to confirm the booking.
- The balance amount payable must be made within 3 working days of the event.
- All rates stated are subject to the prevailing GST rates and 10% service charge.
- Payment can be made via cheque, bank transfer or PayNow. The final payment mode will be stated on your invoice.
- Any booking changes or cancellation must be made at least 5 working days before the date of event.
- The deposit will be forfeited if a cancellation is made less than 5 working days before the event.

FAQ

Drop us an email at hello@theprovidore.com for further enquiries!

What contributes to the minimum spending?

- **Anything from our:**
 - **Catering Menu:** theprovidore.com/catering/
 - **Dine-in Menu:** theprovidore.com/menu/
 - **Retail Range**
 - **Bakery**
 - **Deli**

Can I bring my own cake, alcoholic beverages or ingredients?

- **We have a strict no-outside food and beverages policy at all our outlets.**

For in-house events, am I entitled to free parking?

- **For any parking-related enquiries, please seek assistance from the mall management or concierge.**

Can I engage 3rd party vendors to participate in-house events hosted by The Providore?

- **Yes, you may, as long as the services they provide are not food/beverage related or conflicting with the stated terms & conditions.**

A row of glasses filled with orange juice and topped with a generous amount of shaved ice, each with a black straw. The glasses are arranged on a wooden table. In the background, there are more glasses with a green drink and lemon slices. A semi-transparent grey box with the text "SEE YOU AT YOUR NEXT EVENT!" is overlaid on the right side of the image.

SEE YOU AT YOUR
NEXT EVENT!